



**3DEXPERIENCE**

# **GEOVIA MINEX**

GEOLOGY AND MINE PLANNING FOR  
COAL AND STRATIFIED DEPOSITS



# TAKE CONTROL OF MINE PLANNING WITH INCREASED SPEED AND ACCURACY

## MINEX PROVIDES SOLUTIONS TO KEY INDUSTRY CHALLENGES INCLUDING

- Quickly and efficiently modeling large, deep and data-intense coal projects.
- Accurately measuring coal quality and washability.
- Reducing costs control related to waste removal and haulage.
- Reducing data duplication.
- Improving workplace efficiency and reduce training and errors.
- Using multiple software packages.
- Communicating model plans to stakeholders.

The recognized world leader of integrated geology and mine planning solutions for coal and other stratified deposits, GEOVIA Minex™ ensures resources are evaluated accurately and mined efficiently from exploration to rehabilitation. As a complete solution, data and skills can be readily moved between teams, delivering significant time and cost savings.

Across the world, mining companies turn to Minex to more accurately design, plan and implement mining strategies which drive additional efficiencies, increase productivity, control costs and increase profitability.

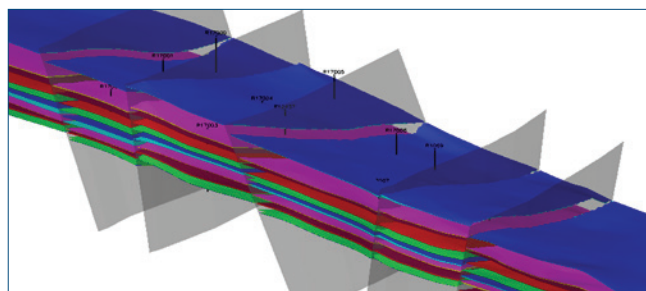
## GEOLOGICAL MODELING AND RESOURCE EVALUATION

Minex's reliable geological modeling tools help geologists manage borehole data, and model and quantify stratified deposits, with support for even the most complex faults, environmental constraints and challenging economic conditions.

## OUR SOLUTIONS

### Integrated data management

- Connects seamlessly to corporate borehole data storage systems including Microsoft® Access® and SQL Server®, Oracle®, and acQuire™.



Minex's repeatable, fast and accurate modeling tools build entire models in minutes.

## BENEFITS

Save time	Mine design made easier
Make better decisions	Speed and accuracy over the entire process
Improve communication	Better interpretation of data with powerful visualisation tools and graphical displays
Achieve greater accuracy	Tight integration with the stratigraphic model

- Provides comprehensive tools to facilitate data validation, auditing and resource reporting to meet reporting requirements.
- Supports import and export of Vulcan and Carlson grid files and seam models as well as string data to AutoCAD®.
- Project input and output files are managed in one location using Minex's file management tools.

## Modeling

- Repeatable, fast and accurate modeling tools build entire models, including seam floor, thickness and quality in minutes.
- Specialized tools for deposits with faults allow accurate modeling of inclined or curved faults, in normal or reverse fault environments.
- Model the complete coal wash curve so that yield, ash and other analyzes can be estimated across the entire deposit, and used in resource and reserves reports to simulate plant processes by area or schedule time.
- Provides multiple industry-standard estimation tools, including an interface to GSLIB for Kriging and conditional simulation.
- Variogram modeling included in dynamic lag adjustment helps identify the best variograms for the data.
- Validation tools including Jack knifing to ensure confidence in the accuracy of geological models.
- Contouring, sectioning, 3D borehole, statistics and histogram displays maximize resource presentations to stakeholders.

## MINE PLANNING AND SCHEDULING

Minex's mine planning functions are integrally linked to the geological model. Planning starts by defining the economic mining areas, so these areas can be targeted during the subsequent pit design phase. Once the pit is designed, the reserves and quality data are stored in a database to provide fast access for viewing, editing and manipulation.



**"With help from Minex, our organization has received approval of our mining strategy. We have also seen our share price rise 67%."**

— Resti Natalia Ginting, Mining Engineering, PT Bukit Asam (Persero) Tbk.

## OUR SOLUTIONS

### Open pit optimization

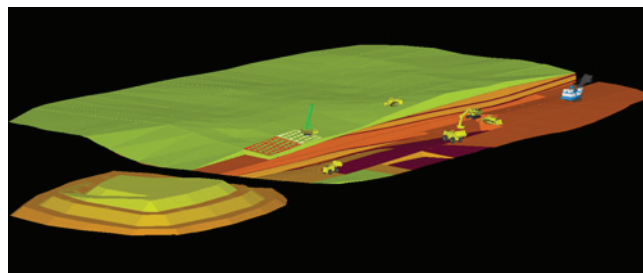
- The Minex Pit Optimizer considers price and cost to locate and generate a final pit that is break even or optimal at its limits, using the well-known Lerchs Grossman (LG) algorithm.
- Pit optimization is ideal where pits are deep and the material in the sloping final highwall makes a vertical analysis difficult. For simpler flat lying deposits, Minex provides both vertical and inclined strip ratio calculations.

### Open pit mine design

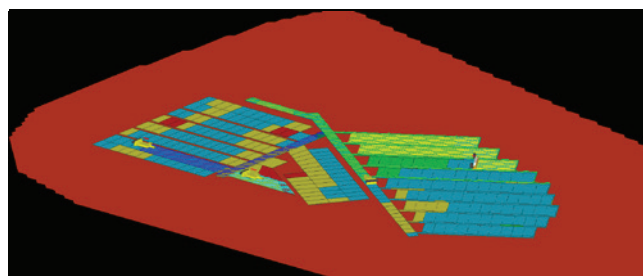
- Powerful and easy-to-use, pit and ramp design tools allow manual or automatic generation of pits or dumps. Ramps are generated as the pit or dump is created, providing instant visualisation of the design.
- Create a road or spoil pile on any existing mine topography and easily patch this into existing surfaces.
- Mine designs are integrated with the geologic model and optimization output, enabling fast, accurate and timely designs. Minex subdivides the deposit into a set of mining volumes or reserves using the intersection of benches, strips and blocks with the geologic model.

### Open pit mine scheduling

- Detailed Interactive Scheduling—Creates schedule by interacting with rich 3D graphic displays generated directly from Minex seam models, pit designs and reserves.
- Target Scheduling—Seek a volume or tonnage in a given scheduling period.
- Excellent flexibility in the monitoring of schedules using "live" current period and historical charts and tables.
- Visually monitor waste and ore extraction information as a schedule progresses to improve decision making and to save time by finding and resolving potential problems early in the scheduling process.
- "Play" any saved schedule to visualize it graphically. This effectively communicates plans to management and operators, and visually validates the plan's practicality.
- Easily perform multiple "what-ifs" by choosing a point in an existing schedule to create a branch to test an alternate scenario. Schedule reporting includes flexible and detailed reports that can be exported directly into Microsoft® Excel®.
- 3D interactive scheduling produces quick schedules for decision making.



The Dump Scheduling and Haulage Planning module delivers a realistic simulation of the short-term mining plan.



Visualize your underground mine design and scheduling.

### Open pit Dump Scheduling and Haulage Planning

- Dump Scheduling and Haulage Planning—Quick and more accurate decision making related to waste removal and haulage.
- Scenario Manager—Organize all tasks related to waste management and haulage in a single interface. Easily create various dump scenarios and take control over the priority, sequence and direction in which dumps are filled.
- Advanced Haulage Planning—Effectively analyze truck cycle times and utilisation leading to optimized truck fleet and haul road selection, and improved cost control.
- An equipment database enables users to add detailed equipment properties and performance characteristics, and accurately estimate haul cycle times from waste blocks in each pit to defined pit exit points.
- Enhanced reporting provides mine planners with the flexibility to summarize the movement of waste and effectively communicate results to key stakeholders.
- Advanced reporting tools allow for quick comparisons between haulage options, leading to the identification and selection of the lowest cost and best alternatives.
- Critical decisions across the business are communicated easily with a visual 3D playback animation function.

**“Minex’s dump scheduling and haulage planning tools allow us to easily integrate into the mine scheduling process different scenarios for hauling waste from pits to dumps via haul roads. In addition, they enable us to analyze our major cost drivers, and help us make better decisions about minimising our operating costs. I am very happy with the release and with our investment in Minex. I am also looking forward to future developments and releases of Minex.”**

— David Delbridge, Manager—Mine Planning and Development, PT Bayan Resources, Tbk.

### Open pit short-term production

- Interface with a variety of modern Survey GPS instruments to download from the field or upload for peg out.
- Quickly and easily design blasts in 3D and upload to equipment for GPS drilling control.
- Build maximum dumps to an elevation, a design surface (such as a permitted limit), or until a desired volume is achieved.
- Design dragline dumps.

### Underground mine design

- Create detailed underground mine designs using a set of rich and interactive tools that provide instant design visualization as it unfolds.
- Quick Layout tool—Create panels for either longwall or bord and pillar layouts based on panel configurations and working types with just a few keystrokes.
- 3D Reserves Display—Display the mine design and colour each block based on a single color, working type or a quality variable.
- Automate the complex process of calculating underground reserves values.

### Underground mine scheduling

- The Minex environment enables interactive scheduling with point and click simplicity and the ability to see bottlenecks, downtime, resource allocation and workflow feasibility.

- Multiple scheduling scenarios can be quickly developed using a set of interactive tools which provide the means to decide on the most effective alternative, optimizing equipment within selected mining precedence constraints.
- Optimize equipment within selected mining locations and constraints.

### Mine rehabilitation

Minex’s mine rehabilitation functions are integrally linked to other planning processes, allowing successful planning of the construction and rehabilitation of final landforms.

### OUR SOLUTIONS

- Staged dumps can be quickly designed from the excavation surface to an elevation or landform design. Dump volumes can be progressively matched to the schedule period volumes ensuring the dumps are practical.
- Cross Section Rehabilitation—Simplifies the complex task of dozing down a truck shovel dump to form a final rehabilitation surface.
- Spoil Reshaping—Smooths mine dumps into a final landform that meets environmental limits while minimizing reshaping costs.
- Minimize dozing while meeting elevation and slope restraints.

For more information email [GEOVIA.Minex@3ds.com](mailto:GEOVIA.Minex@3ds.com) or visit [www.3ds.com/products-services/geovia/products/minex](http://www.3ds.com/products-services/geovia/products/minex)

## Our 3DEXPERIENCE® platform powers our brand applications, serving 12 industries, and provides a rich portfolio of industry solution experiences.

Dassault Systèmes, the 3DEXPERIENCE® Company, provides business and people with virtual universes to imagine sustainable innovations. Its world-leading solutions transform the way products are designed, produced, and supported. Dassault Systèmes’ collaborative solutions foster social innovation, expanding possibilities for the virtual world to improve the real world. The group brings value to over 210,000 customers of all sizes in all industries in more than 140 countries. For more information, visit [www.3ds.com](http://www.3ds.com).

